

Naches-Selah Irrigation District

SPRING/SUMMER 2022

VOLUME 33

What's
New:

FLUME
REPLACEMENT
PROJECT REPORT

AQUATIC WEED
& HERBICIDE
APPLICATION

DISTRICT
UPDATES

April 1

Water Start Date

We open our gate at the Naches River on April 1, 2022. It takes two to three days to fill the system and flush out debris. Full priming of laterals can take about two weeks.

Please call us by 2 p.m. the day before you turn your water on or off to avoid flooding your neighbors or burning out their pumps.

It is a gravity-flow system and water adjustments are made from the Naches River that can take a day to reach the Selah area.

We have rotating patrolmen on duty every day during water season. Our office is open 8 a.m. – 4 p.m. Monday-Friday. Call us if you have any issues and we will contact the patrolman assigned to your route that day.

We are accepting irrigation pre-orders now!

Not just a pipe dream-

No. 3 Lateral Project

The No. 3 Lateral project to replace wood flumes and pipe portions of this lateral canal has taken years of planning and efforts on the part of many people. Thanks to the support of water users voting for the \$6.1 million dollar bond, contracts for pipe supplier and general contractor were awarded Fall 2021.



33" pipe being installed - No. 3 Lateral near 2.8 mile, Tibbling Rd.

continued, pg. 2

BOARD OF DIRECTORS:

Rod Matson, President
Craig Sundquist, Director
Tom Allan, Director



INFO@N-SID.ORG
104 W. NACHES AVE., STE. H.
SELAH, WA 98942
(509) 697-4177

No. 3 Lateral Project, cont.

The pipe contract was awarded to Krah USA, LLC of Prineville OR. The installation contract was awarded to Tapani, Inc. of Battleground, WA. Tapani, Inc. has helped the District with past improvement projects.

Tapani, Inc. moved heavy equipment to the project late December 2021 to begin work in January 2022. Tapani, Inc. crews have worked steadily to have 2.5 miles of pipe installed and ready for use in April.

Not everything has gone smoothly. Delays on delivery of large valves and other supply chain problems required major changes to the project. Project engineer, District and Tapani, Inc. adjusted the plans to the valves and pipe that could be delivered in time.

Patrolmen received the pipe deliveries all winter and are now re-connecting deliveries where waterboxes have been removed.

Thank you to adjacent landowners for your help with this major project. There was a lot of activity in a few months to replace the sections of the No. 3 Lateral through your neighborhoods.

As with prior modernization projects, we look forward to seeing the benefit of these improvements!



36" pipe being installed - No. 3 Lateral near 1.6 mile, Heather Heights Drive area



36" pipe being installed - No. 3 Lateral near 2 mile, Heather Heights Drive area

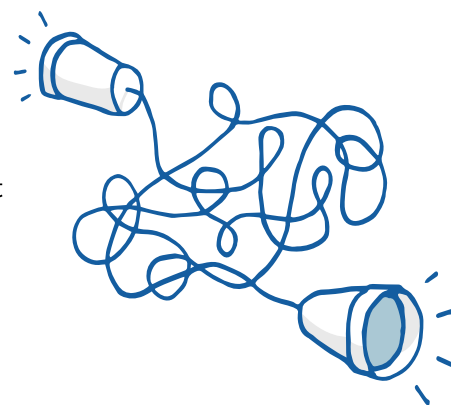
How can we reach you?

Unlike many other services you use, we don't require that an account is created with us before you use our services. But that often means we don't have contact information to reach you in an emergency!

Please contact our office at (509) 697-4177 or info@n-sid.org to make sure we have your phone and/or email address. You can also opt in to receive chemical application email notifications. Meloni is happy to help you!



Meloni Luciani
Administrative Assistant



When does it rain money? When there's change in the weather!

Aquatic Weed & Herbicide Application

Legal Notice

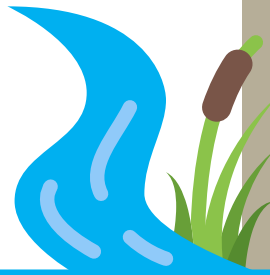
The Naches-Selah Irrigation District will be applying aquatic weed herbicides to its irrigation canals and laterals between April 1, 2022, and October 31, 2022, in accordance with Washington Department of Ecology pesticide laws, rules and general permit. The purpose of the herbicide applications is to control aquatic weeds within the irrigation delivery system. The herbicides in use include copper sulphate. (Pesticide EPA label and WSDA are also followed as applicable.)

Treatments will be made to the irrigation facilities within the boundaries of the Naches-Selah Irrigation District located in Yakima County. Applications are generally made every two weeks starting in May ending in October as needed. Weather and other conditions determine the application schedule on an as needed basis.

Waters within the District are intended for agricultural purposes only and are not for human consumption or primary contact such as swimming or aquaculture. Irrigation facilities can be dangerous, and are intended for District operation and maintenance personnel only. District facilities are not for public use and are not to be trespassed upon. Herbicides will be applied under the direction of licensed District personnel.

Naches-Selah Irrigation District
(509) 697-4177

Washington Department of Ecology,
Central Office (509) 575-2800



Watermasters



When parcels are subdivided to a point where one of the parcels is less than 2.5 acres or the water allotment to a parcel is less than one Miner-inch, a joint water agreement is created through a Water Covenant. One of the lots is designated the Watermaster and the other lot(s) are considered Tenants.

What is the watermaster's role?

"With great power comes great responsibility."

- Collects assessment portions from tenant parcels
- Contacts NSID on behalf of all users in their covenant for water orders and problems.
- Decides how the water is shared (rotated or prorated)

We encourage all our Watermasters to be good neighbors, and if the crown is getting heavy, we do have a process to reassign the duty to another parcel if all parties agree. Give us a call!

From the Archives

Water-Bearing "Lifeline" Comes to Valley

"The great success of Selah Valley orchardists in the past half-century was made possible by a mile-long, timber-supported metal flume built between 1906 and 1908 to delivery vital irrigation water from the Naches River. Photo is of partially-completed structure and the hardy, predominantly Swedish crew of pioneers who built it."

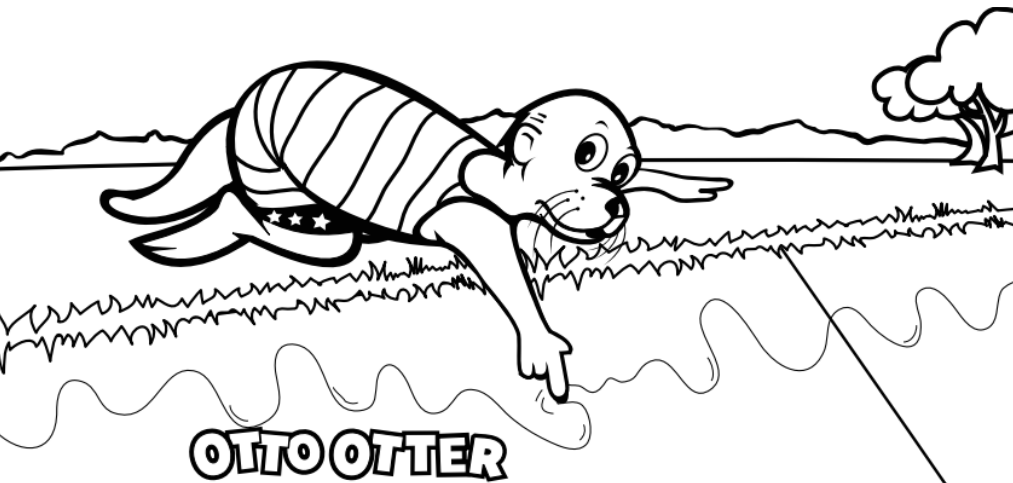
Selah Valley Optimist, February 20, 1947



circa 1906-1908



Friendly Reminders



OTTO OTTER

says: Concrete canals have slippery sides that make it impossible to climb out. Stay away!

OTTO OTTER

dice: Los canales de cemento tienen lados resbalosos que hacen imposible tratar de salirse. ¡No se acerquen!

Download the entire Otto Otter Canal Safety coloring book at usbr.gov/pn/about/coloringbook.pdf



Don't ruin a beautiful day by digging unsafely

If you're tackling outdoor DIY projects this summer, make sure you call 811 prior to digging so you don't hit an underground utility line.

Call 811 or visit Call811.com before digging.



From NSID: Please place your request **2 business days** before digging. This is a free service that notifies all relevant utilities, including us!

NSID Easements

The easements and rights-of-way (ROW) on canal banks are not for public access. Easements are for access and maintenance of District facilities.

Please do not place fencing, gates, trees or shrubs within the easements. If you aren't quite sure where this is located on your property, please feel free to give us a call or stop in and we can print a map for you.

Whether it's an open canal or underground pipe, the easements are generally:

Main Canal - 60' ROW (30' from center)

Laterals - 30' ROW (15' from center)

Smaller pipelines - 15' ROW (7.5' from center)

Water Rentals

When a water rental agreement is extended for an additional year, it is in force for the entire season. If you sell your property, please let the new owner know the water will not be available to them until the following season.

Interested in renting out some of your water next year? If you have a minimum of one Miners-inch, you may receive the assessment rate minus a small processing fee (currently \$20).

Contact Heather at (509) 697-4177 or officemgr@n-sid.org with any questions regarding water rentals.

Office Closures: Our office will be closed May 30 for Memorial Day & July 4 for Independence Day.

2022 Board Meetings

- April 11; 9:00 a.m.
- May 10; 9:00 a.m.
- June 10; 9:00 a.m.
- July 11; 9:00 a.m.
- August 10; 9:00 a.m.
- September 9; 9:00 a.m.
- October 10; 9:00 a.m.
- November 10; 9:00 a.m.
- December 9; 9:00 a.m.

NSID board meetings are open to the public. They are often remote. If you would like to attend a meeting, please contact our office for information.

2022 Assessments

There was no increase to the NSID assessments for 2022 and remain at \$580/miner's inch. Your irrigation assessments are paid to the Yakima County Treasurer's office. View and pay your property tax at:

<https://yes.co.yakima.wa.us/ascend/>

NSID Processing Fees

effective January 1, 2022

Short Plats & Boundary Line Adjustments

\$100

Long Plats \$100 + \$20/parcel

+ Water agreement \$25

+ Additional drafts *labor rate*

Water Sales/Transfers

Single owner \$25/parcel

Multiple owners \$50/parcel

Rental Water

Lessor (water out) \$20/annually

Lessee (water in) \$30/miner's inch

From the Manager

Justin Harter



Selah Valley Canal has now served our communities for 130 years. State of the art improvements from early last century were good investments. After decades of service these facilities are reaching the end of their useful lives. The No. 3 Lateral Project replaced the last mile of wood flumes in use. There remain two buried wood siphons in use, 755 feet long, 54 inch diameter on the No. 1 Lateral and 1,055 feet long, 50 inch diameter on the No. 3 Lateral. Adding to the list of aging facilities are concrete lined tunnels with the first constructed in 1918.

Replacing wood facilities is a major focus of recent modernization projects. Concrete structures constructed in 1918-1960 are being repaired and maintained. Eventually major rehabilitation or replacement will be needed on these concrete sections of the system. The system is more reliable today with improvements made in the last 30 years. We expect the new materials in use to last over 100 years. Matching and likely exceeding the longevity of the century old facilities we are replacing.

Water users, Board of Directors, District staff are another important part of the system. We work together every year to bring water from the Naches River to benefit the lands within the District. Fruit trees, berries, hay and pastures are the crops seen covering the District. Lawns and colorful landscapes surround the homes in our communities. Like years prior, 2022 will bring challenges. Through cooperation we will share in the continued success.

2022 Capital Improvement Projects

Jordan #29 - Replace 3,800' pipe \$60,000

Lancaster #10 - Replace 2,200' pipe \$15,000

Lyon #32 - Replace 2,000' pipe \$45,000

Tibbling #14 - Replace 1,300' pipe \$40,000

Replace waterboxes \$30,000

SCADA Radio System \$80,000

No. 3 Flume Replacement & Canal Improvements \$6,000,000

2021 Awarded Contracts

Krah USA - \$1,650,269.50
Pipe and fittings for No. 3 Flume Replacement Project. Awarded 10/1/2021

Tapani, Inc. - \$3,998,400.00
Removal of No. 3 flume and construction/installation of 2.5 miles irrigation pipe. Awarded 12/10/2021.

Bid quotations are open for review at our office during normal business hours.

Welcome Heather Hadsel



Heather Hadsel was hired as our Office Manager in October 2021. Born and raised in the Yakima Valley, she has experience in business management as well as river operations and conservation in the basin.

Don't forget:

The first half of your assessment is due by April 30 to avoid late fees and interest.

Naches-Selah Irrigation District

104 W. Naches Ave. Ste. H

Selah, WA 98942

PRSR MKT
US POSTAGE
PAID
YAKIMA, WA
PERMIT 90

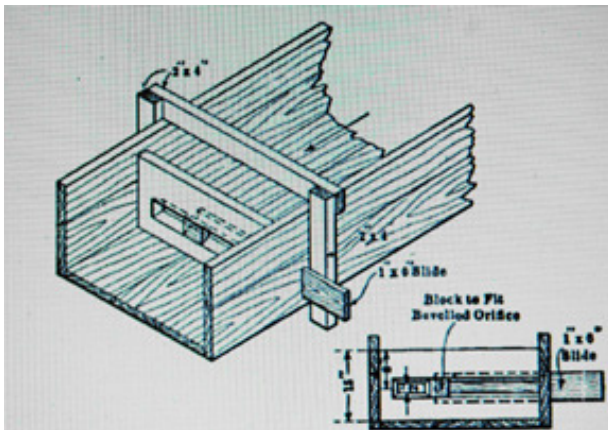
Spring/Summer Newsletter

What is a "Miner's Inch"?

There are a few ways to measure irrigation flow. We use the Miner's Inch, a unit of stream flow used by miners since the late 1800s.

If the water allotment on your parcel is one (1) Miner's-inch, it is the flow of water through a 1" square aperture through a 2" plank below 6" of water pressure.

Clear as mud? That equals about 11.25 gallons per minute and is considered adequate for 2.5 acres of beneficial-use irrigation (.40 miner's inch per acre).



A view of a miner's inch measuring device, with an adjustable orifice. Source: Irrigation Practice and Engineering, Volume 3, by B.A. Etcheverry, University of California, 1916.

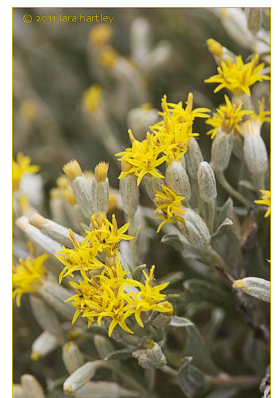
**Naches-Selah
Irrigation District**

WATER ORDERS & CUSTOMER SERVICE
8:00 A.M. - 4:00 P.M.
(509) 697-4177

AFTER-HOURS EMERGENCIES
(509) 697-4177 X3

Have you botany plants lately?

The long-awaited spring is a great time to add a few new plants to your landscaping. Consider water-efficient plants ideal for our shrub steppe like the **Spineless horsebrush**, pictured. A part of the aster family, it blooms in July-August and grows up to 32" high.



Spineless horsebrush